

Burlington County College

Organizational Chart

Document #: OIR-012-07

Date: February 21, 2007



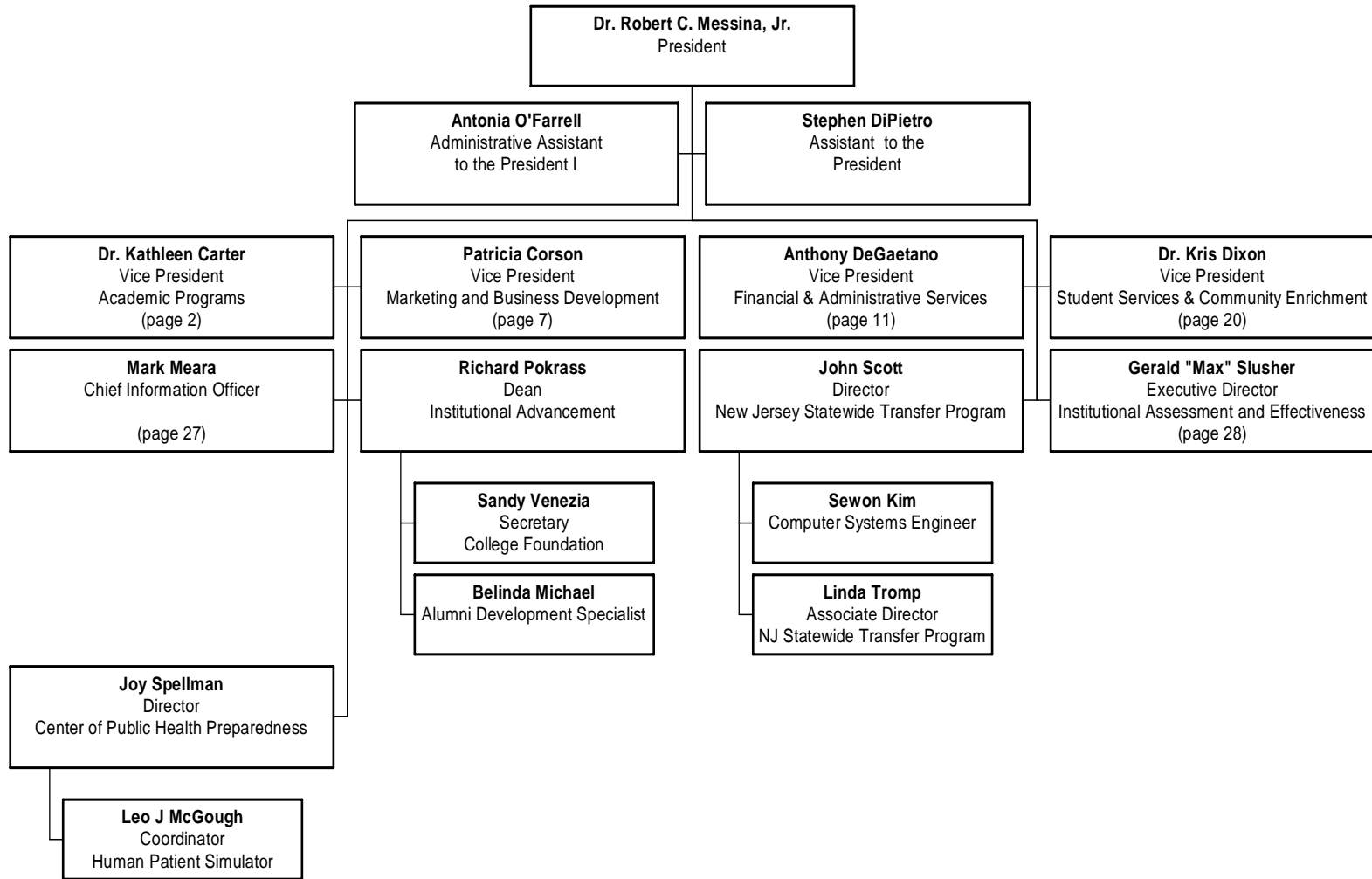
Prepared by Holly Staatse
Office of Institutional Research
Burlington County College
601 Pemberton-Browns Mills Rd, Pemberton, NJ 08068
(609) 894-9311 • www.bcc.edu



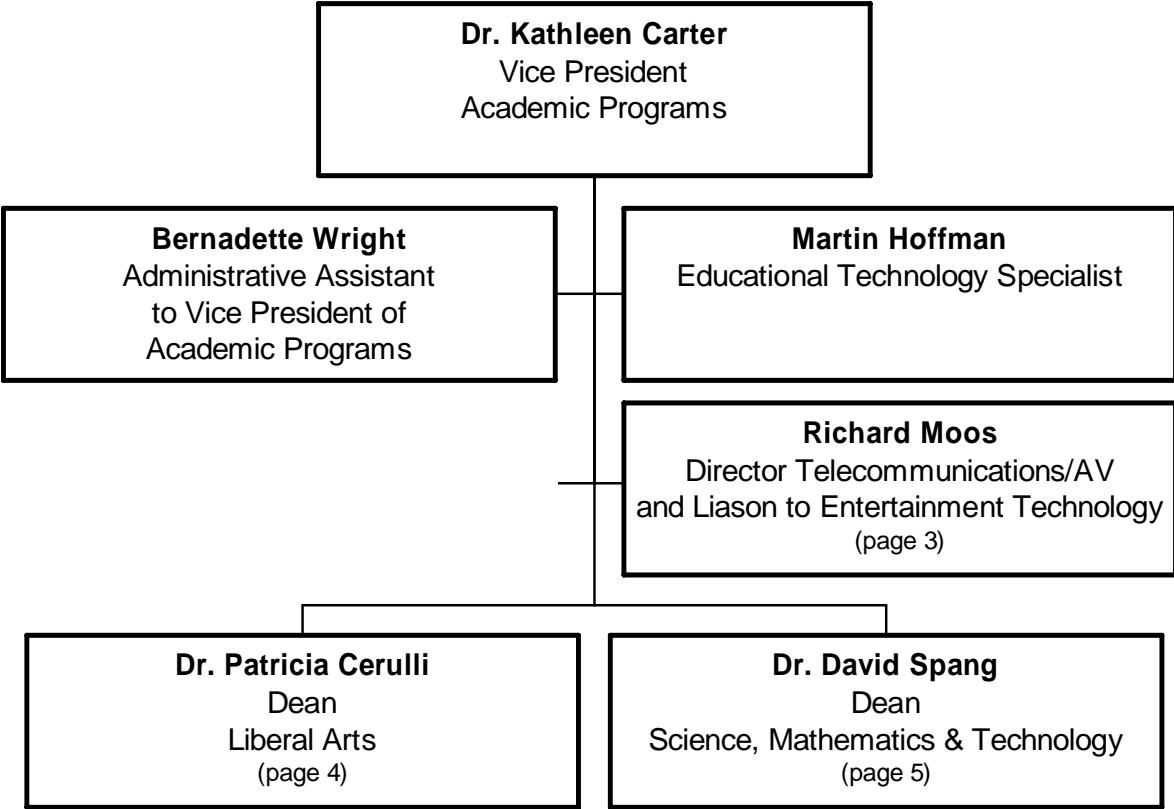
Burlington County College Organizational Chart
Table of Contents

- President’s Staff 1**
- Academic Programs..... 2**
 - Telecommunications and Distance Learning 3
 - Liberal Arts 4
 - Science, Mathematics and Technology 5
 - Nursing and Allied Health 6
- Marketing and Business Development..... 7**
 - Test Center 8
 - College Relations & Publications 9
 - Institute for Professional Development, Willingboro Center 10
- Financial and Administrative Services 11**
 - Accounting..... 12
 - Administrative Services..... 13
 - Print Facilities 14
 - Library..... 15
 - Human Resources 16
 - Public Safety 17
 - Construction Management / Physical Plant (Pemberton, Willingboro, Mount Holly) 18
 - Construction Management / Physical Plant (Mount Laurel) 19
- Student Services 20**
 - Educational Opportunity Fund 21
 - Registration 22
 - Recruitment..... 23
 - Academic Advisement and Transfer 24
 - Community Enrichment 25
 - Financial Aid 26
- OIT/PC Techs..... 27**
- Institutional Research..... 28**

President's Staff



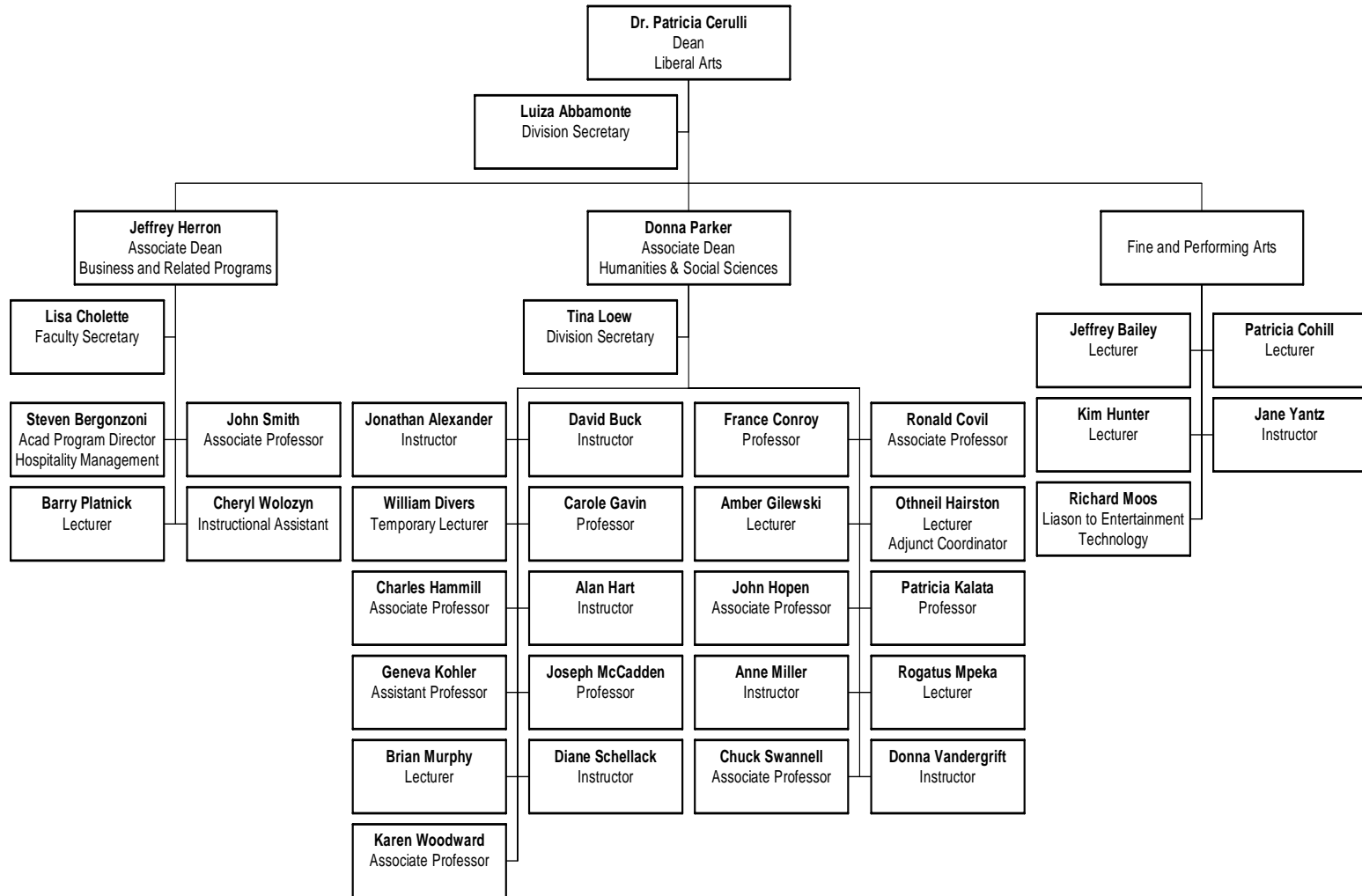
Academic Programs



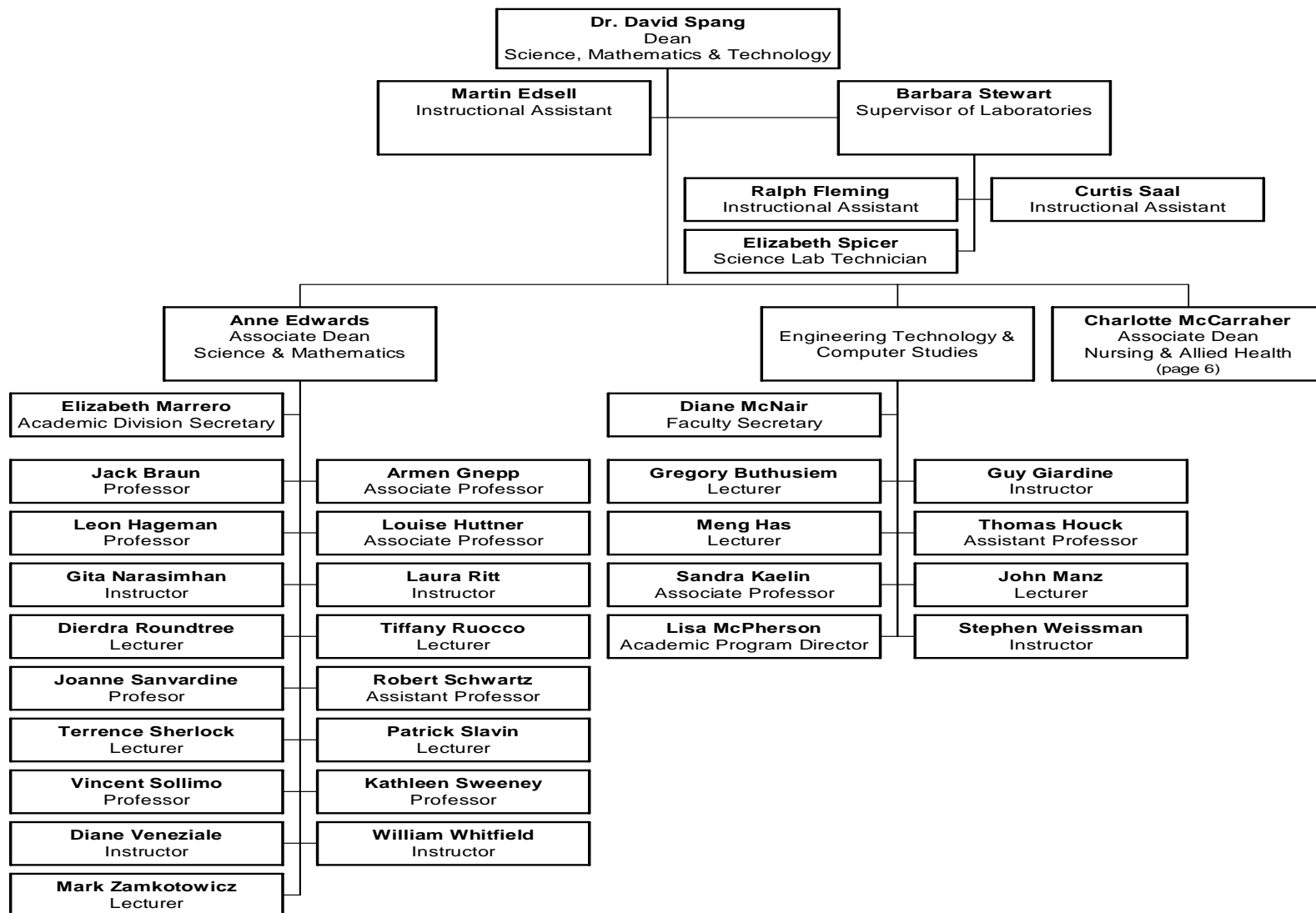
Telecommunications and Distance Learning



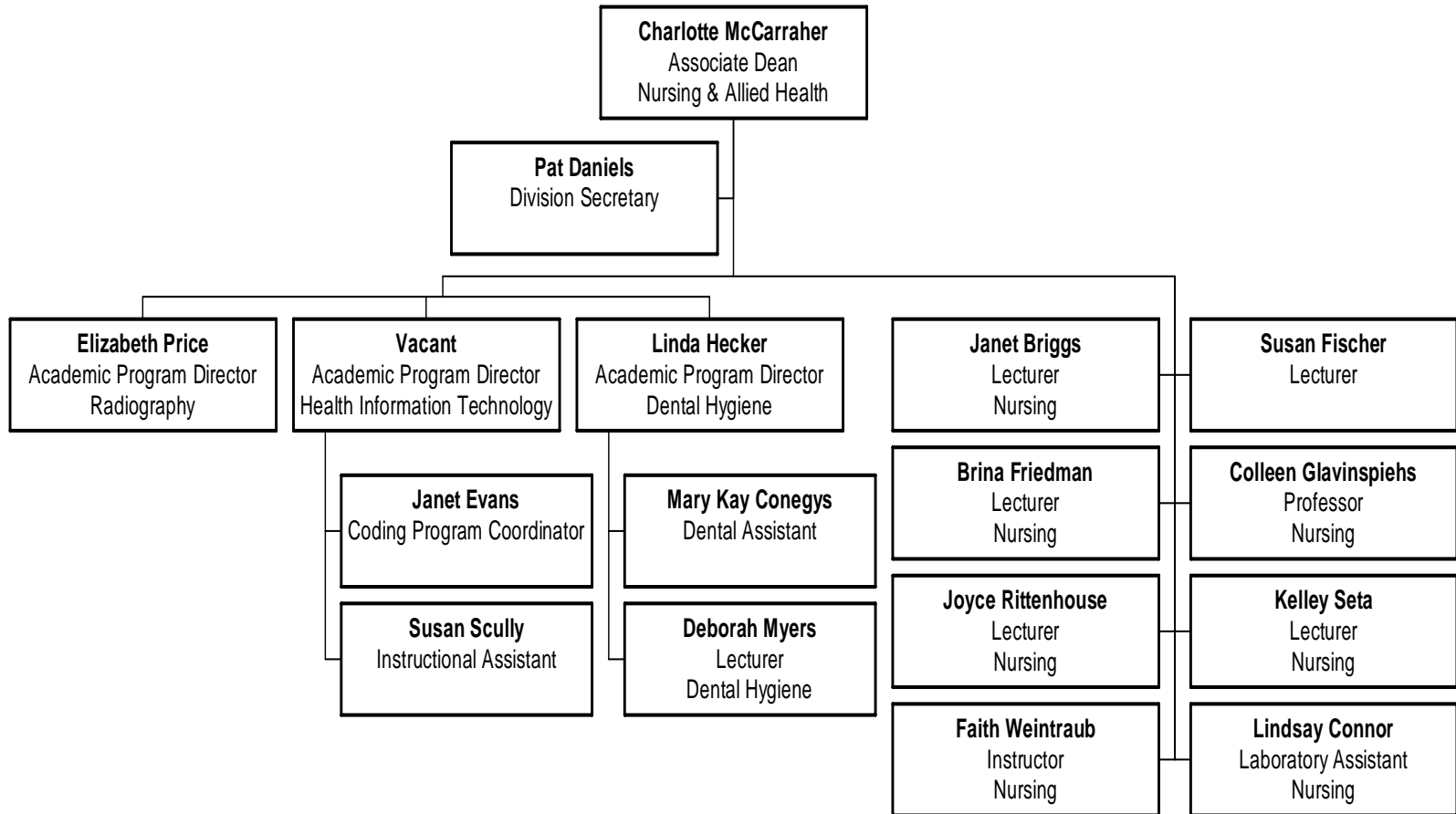
Liberal Arts



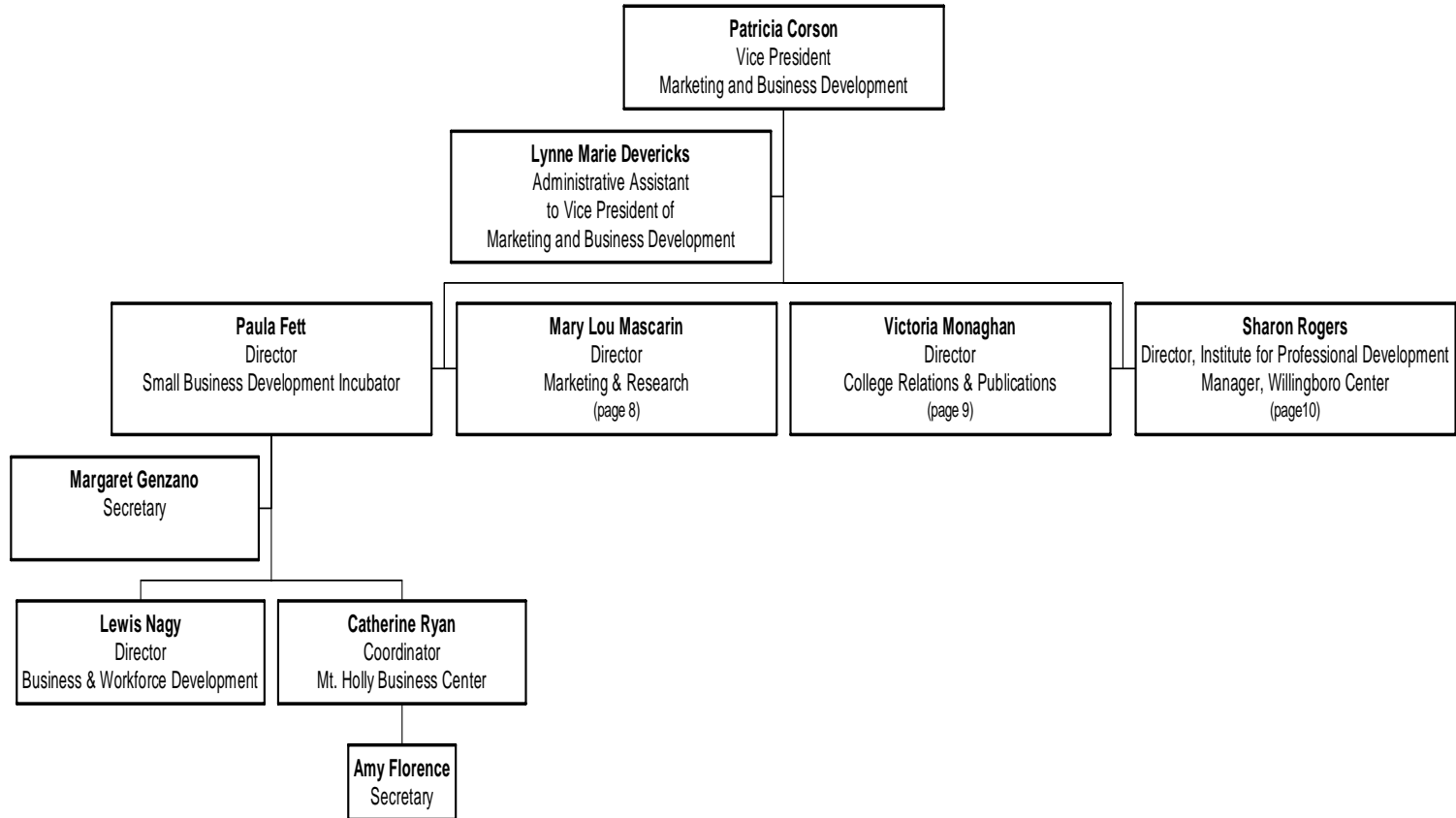
Science, Mathematics & Technology (SMT)



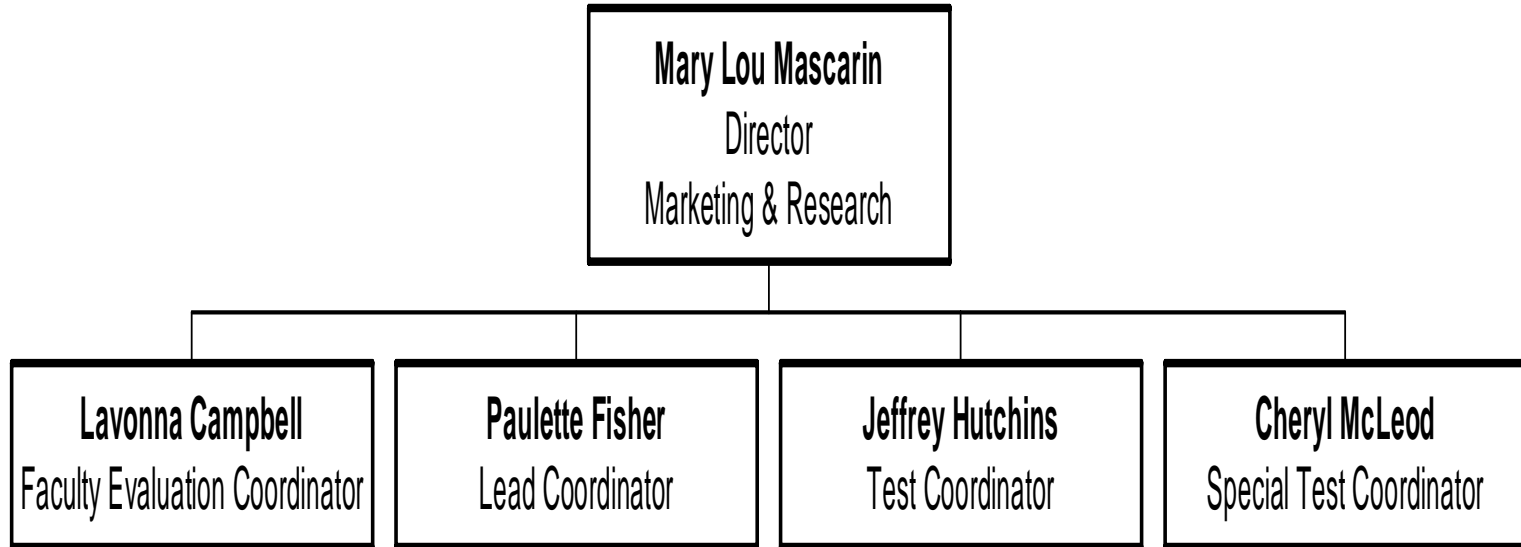
Nursing & Allied Health



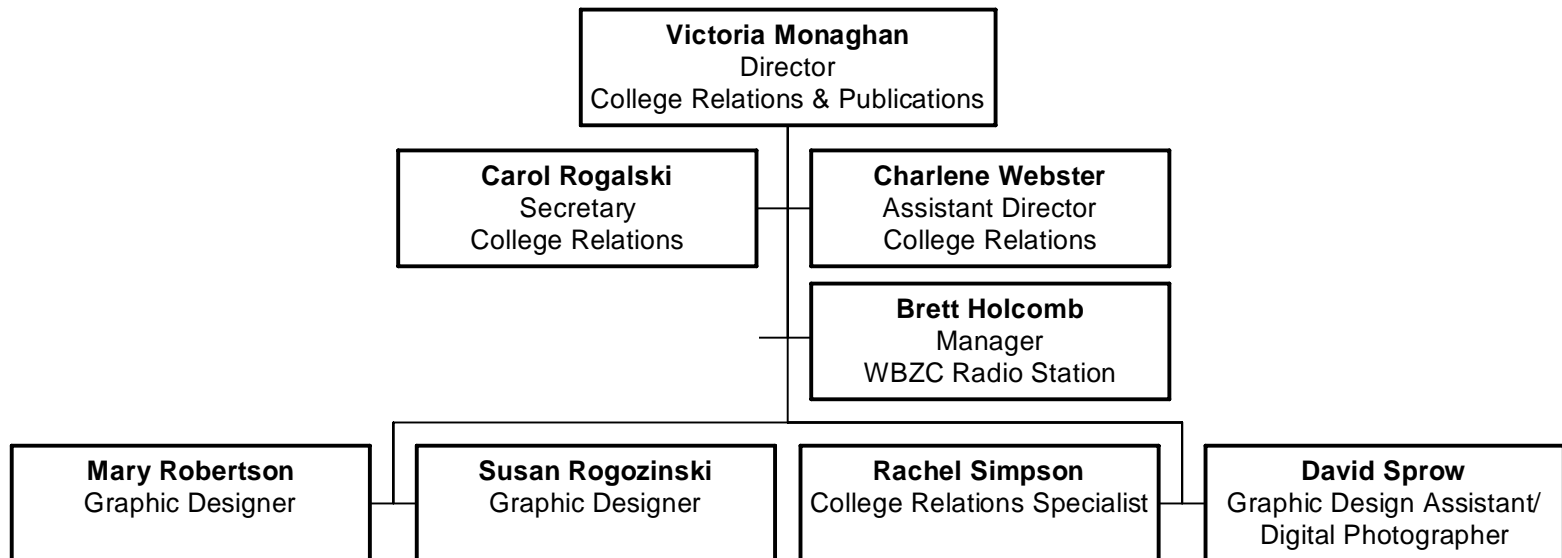
Marketing and Business Development



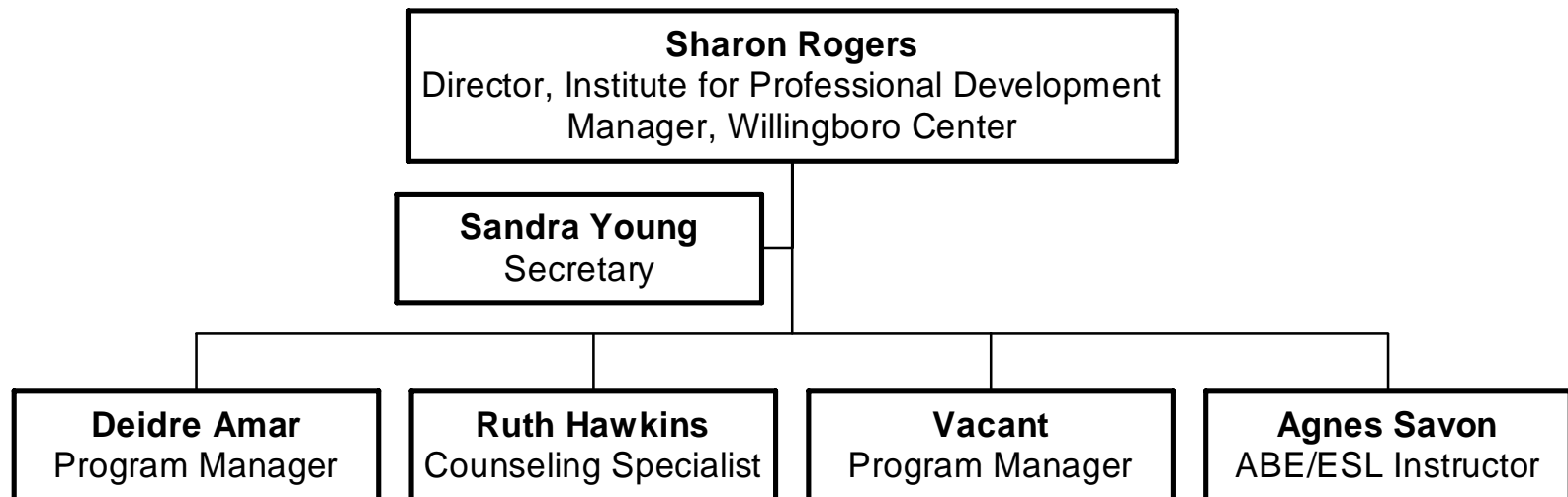
Test Center



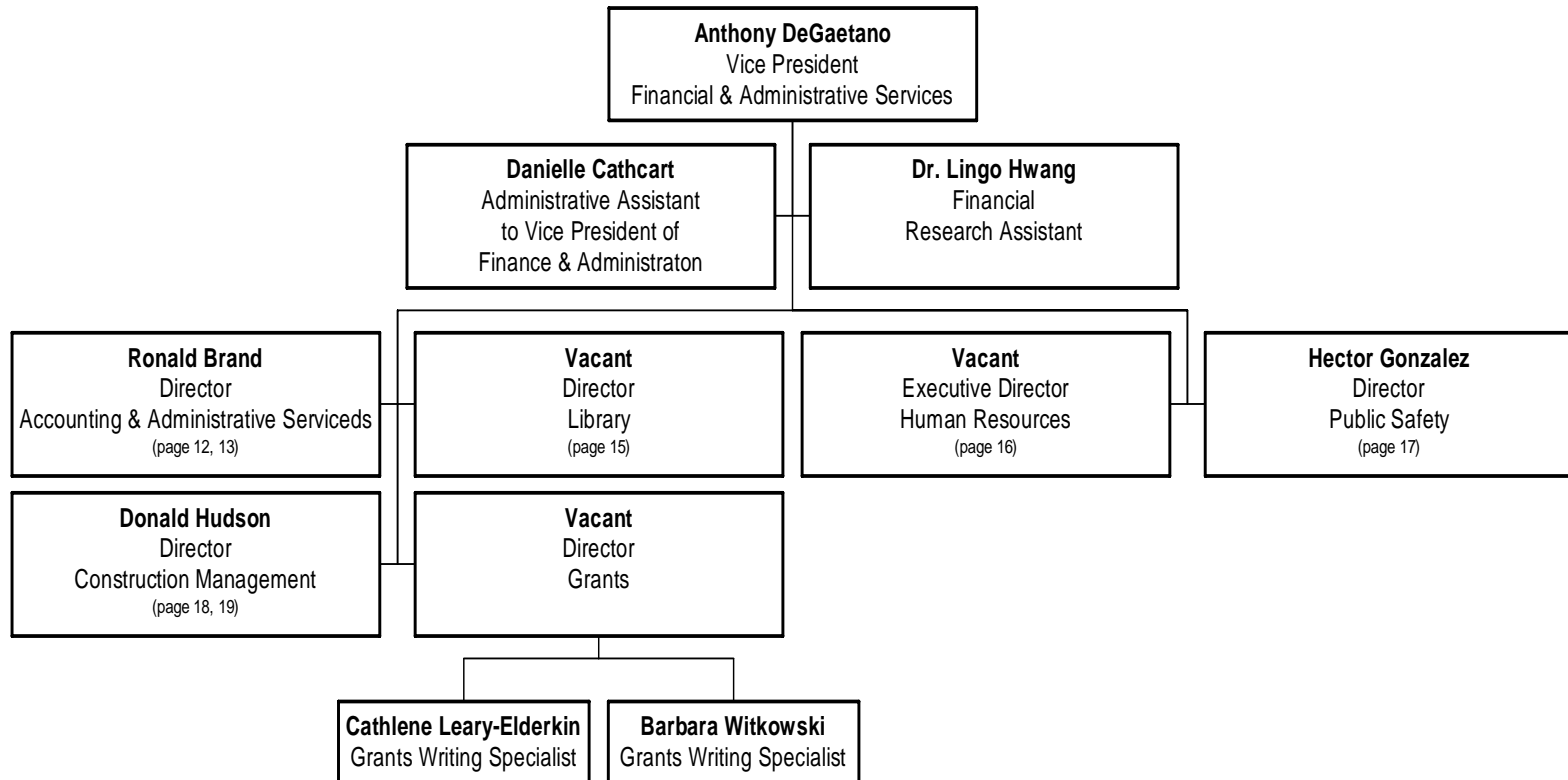
College Relations & Publications



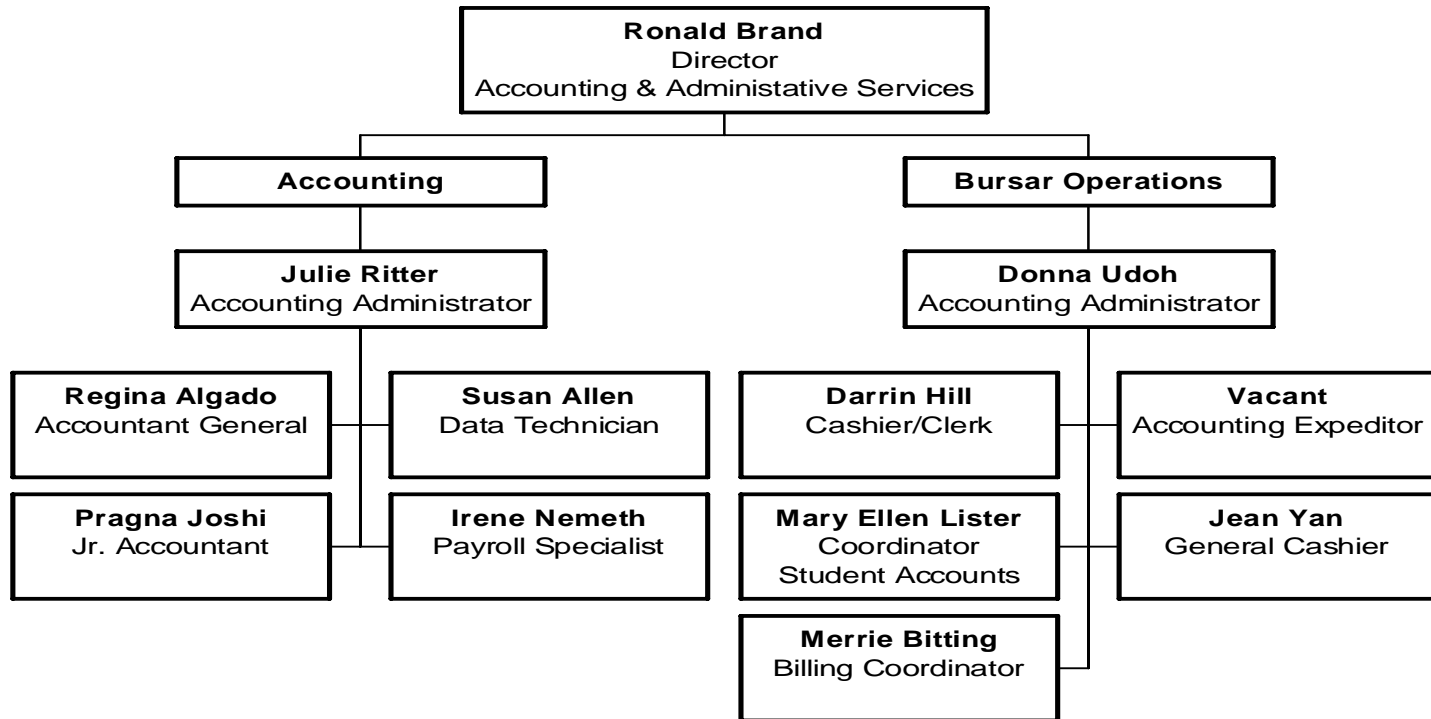
Institute for Professional Development Willingboro Center



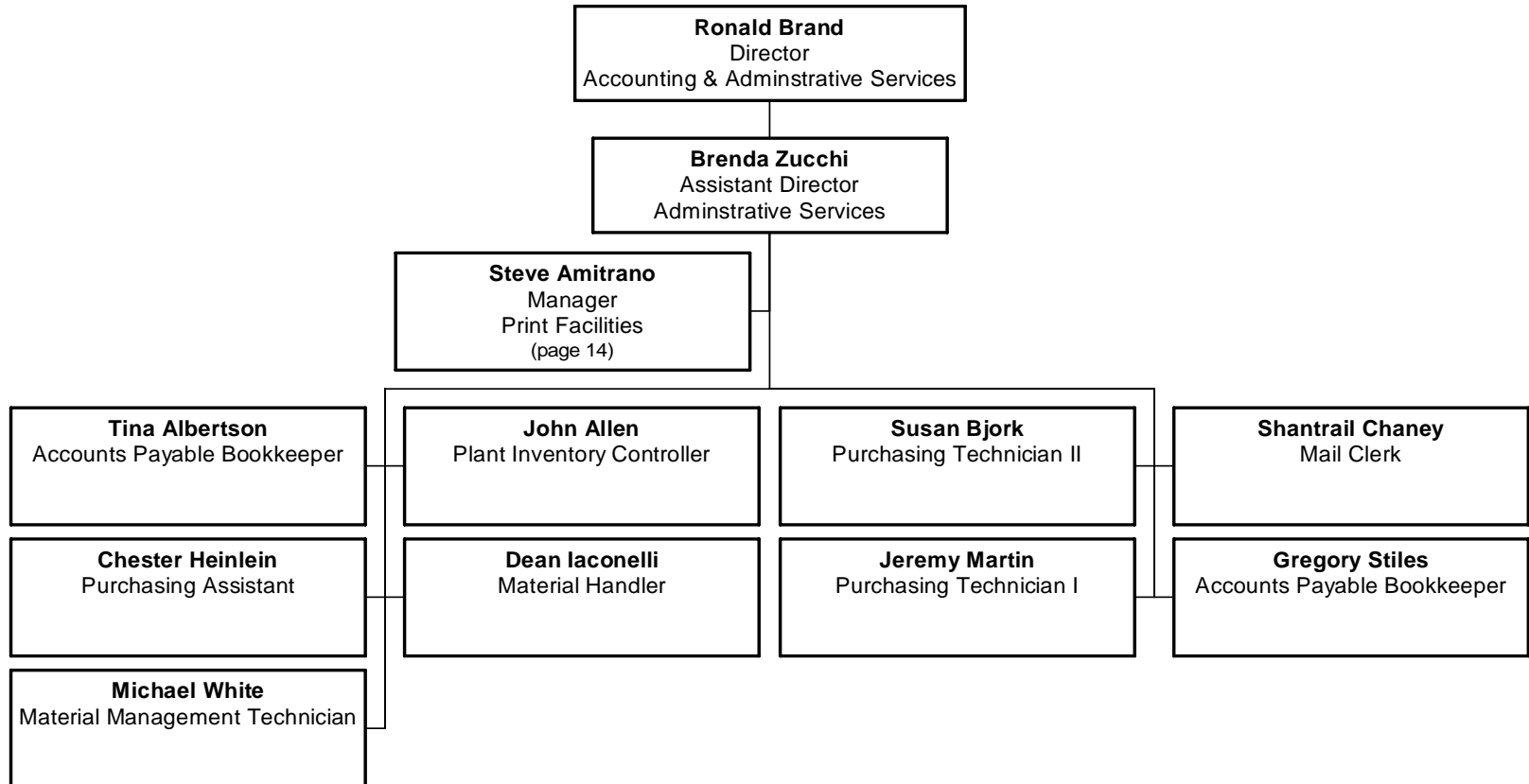
Financial & Administrative Services



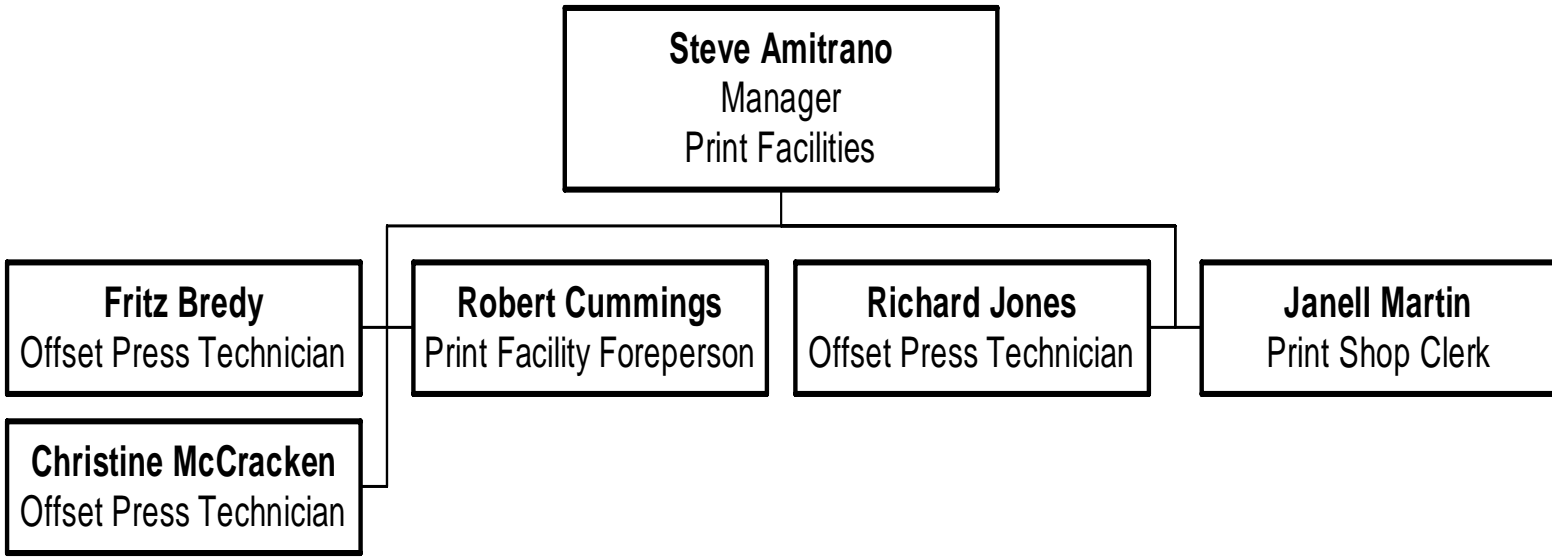
Accounting



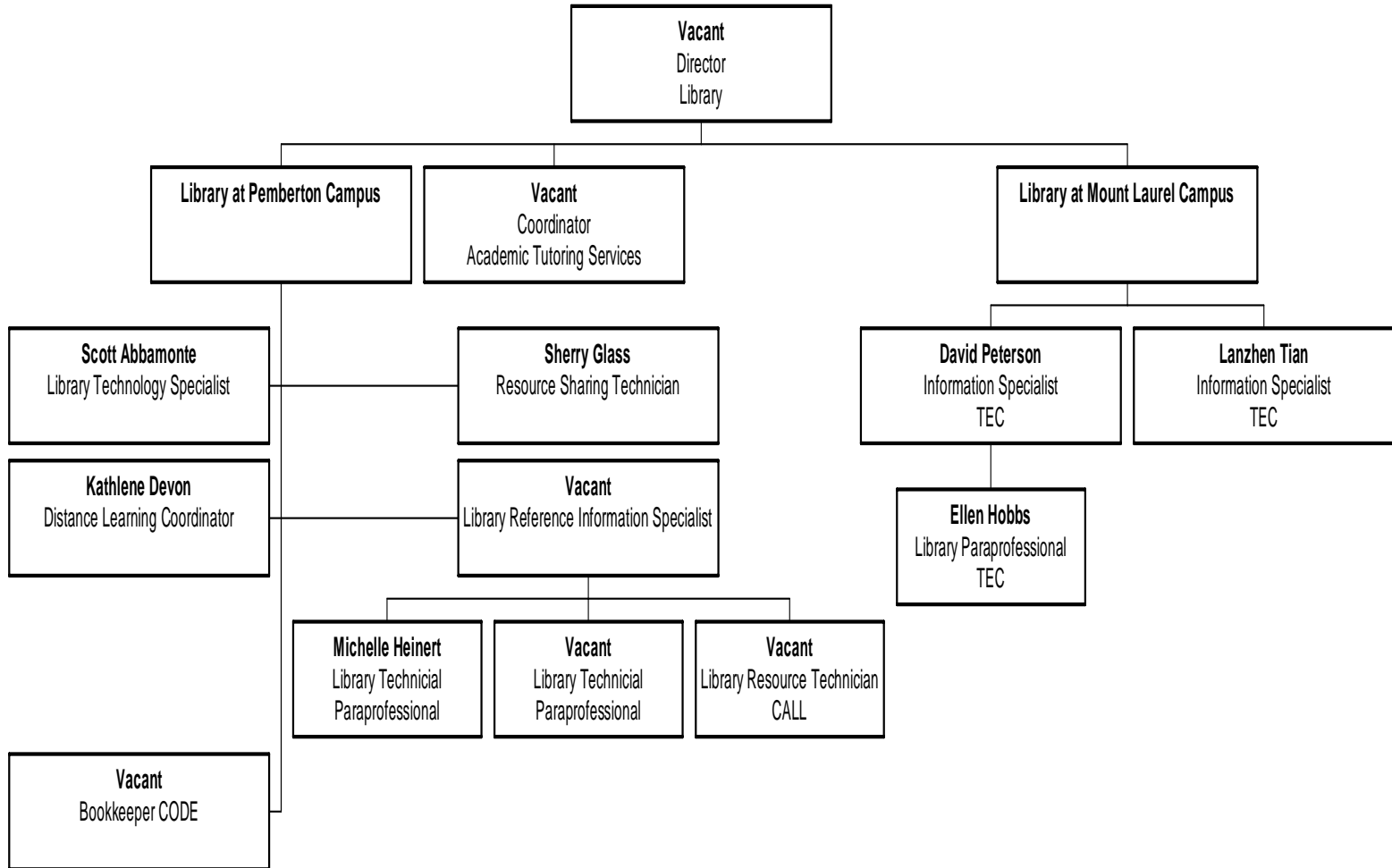
Administrative Services



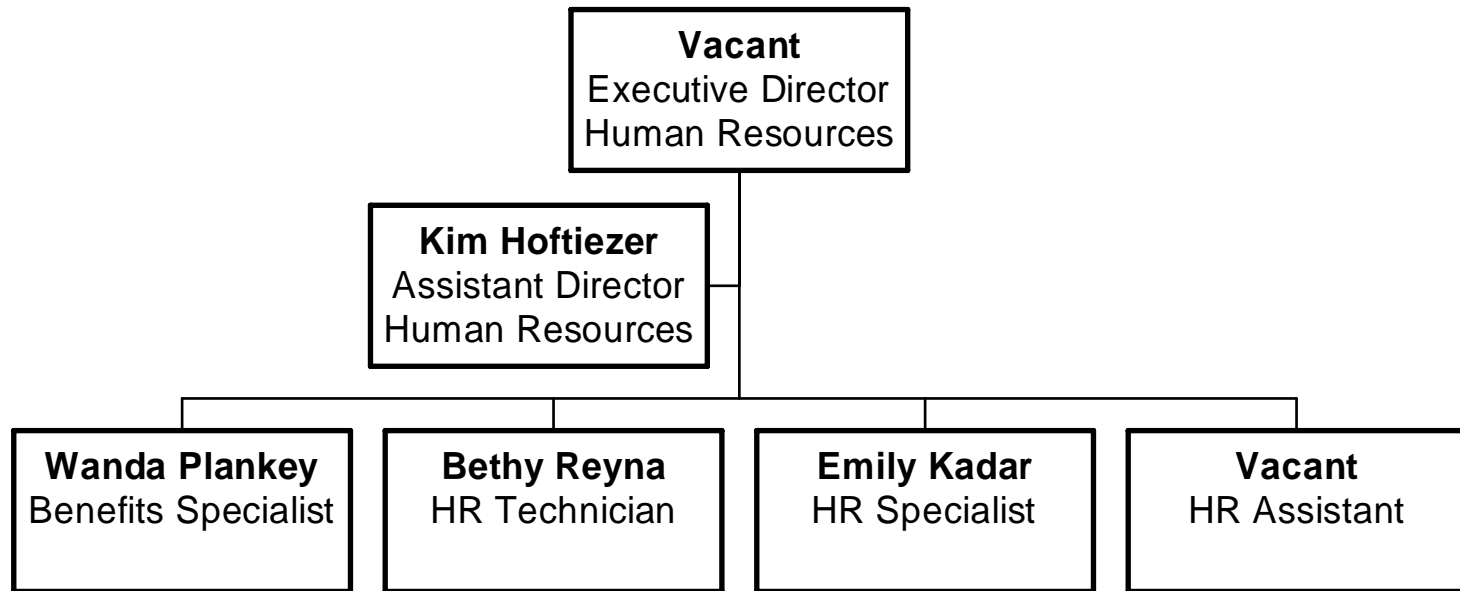
Print Facilities



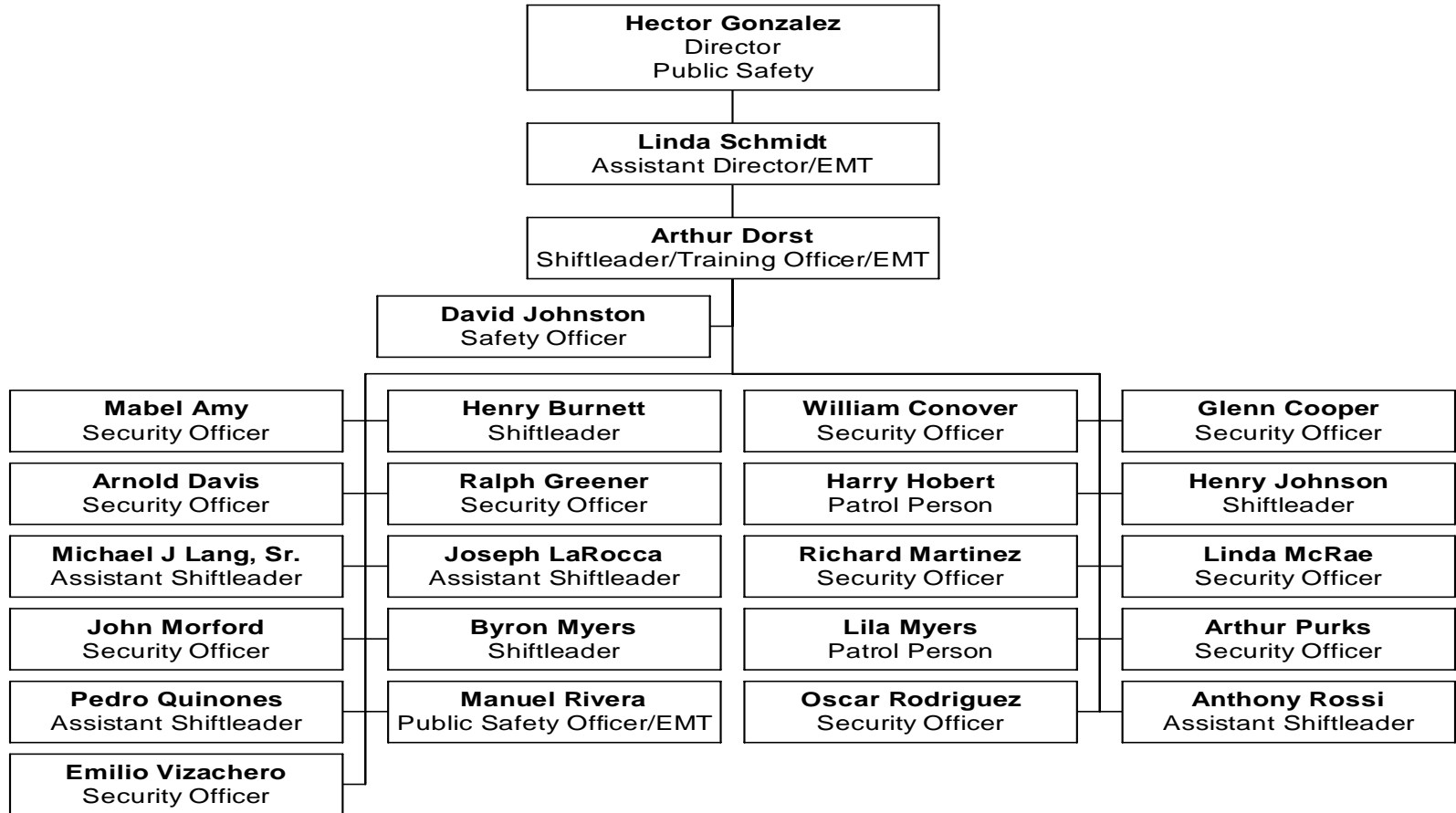
Library



Human Resources

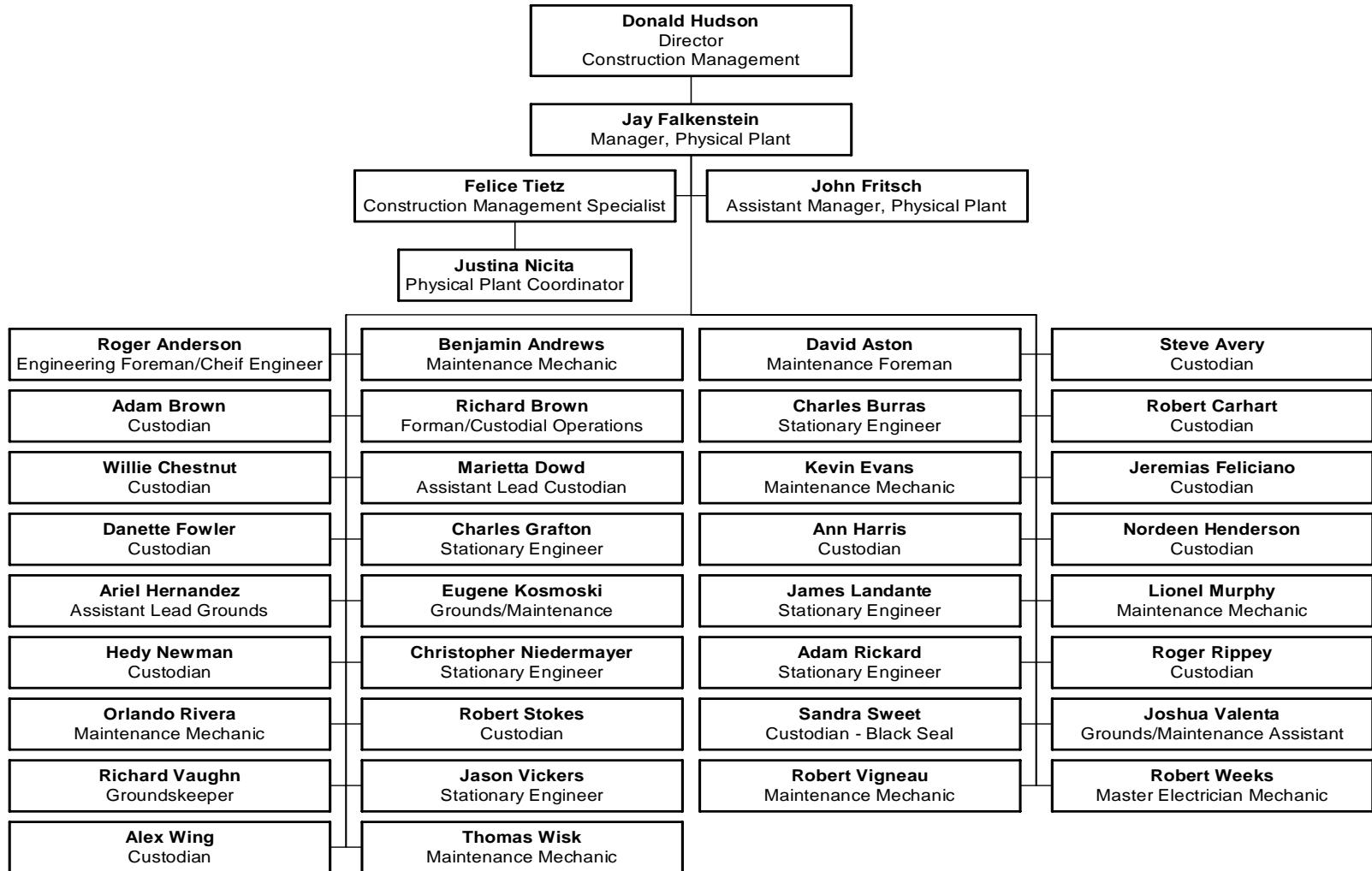


Public Safety



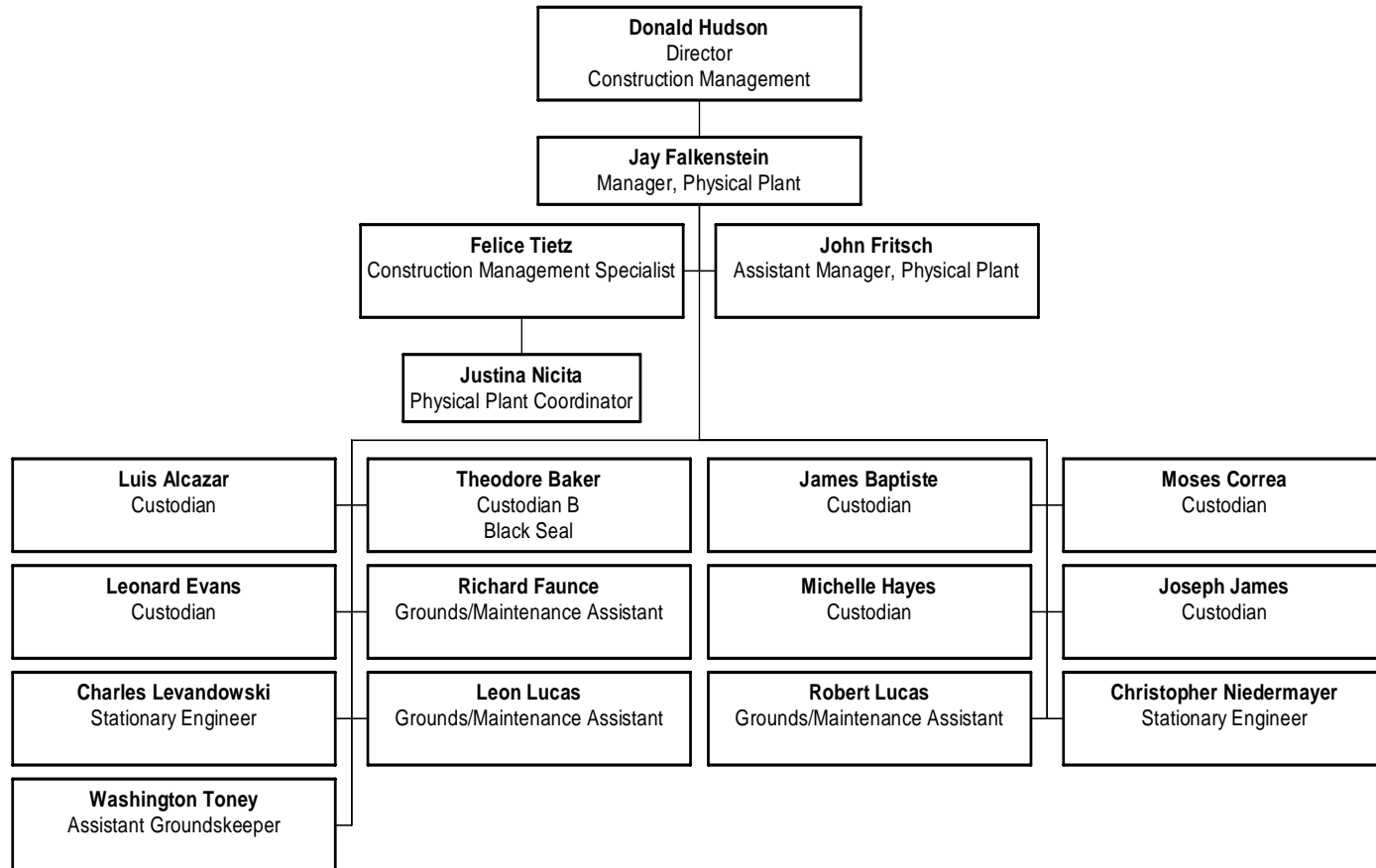
Construction Management / Physical Plant

(Pemberton, Willingboro, Mount Holly)

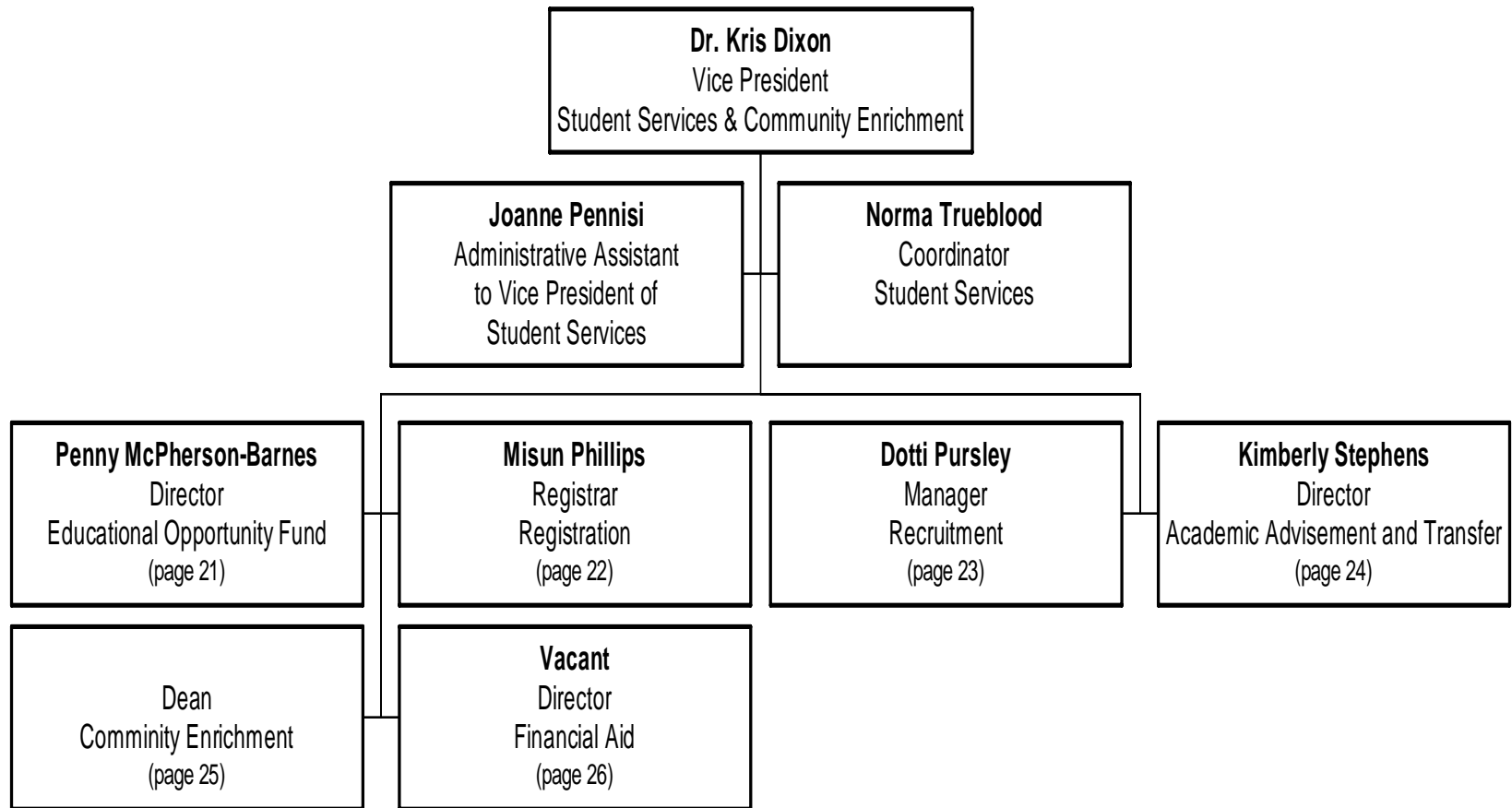


Construction Management / Physical Plant

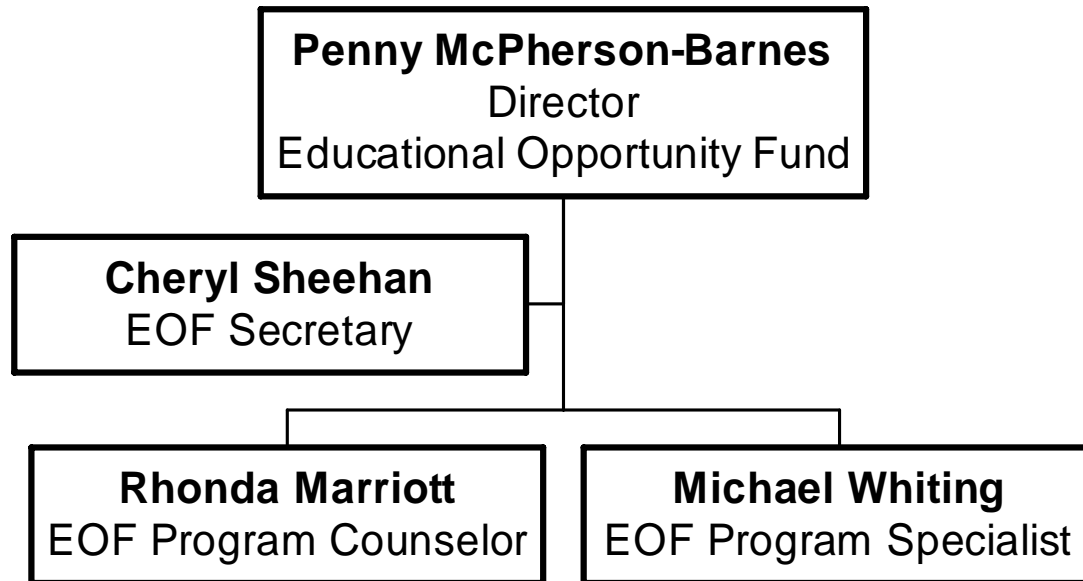
(Mount Laurel)



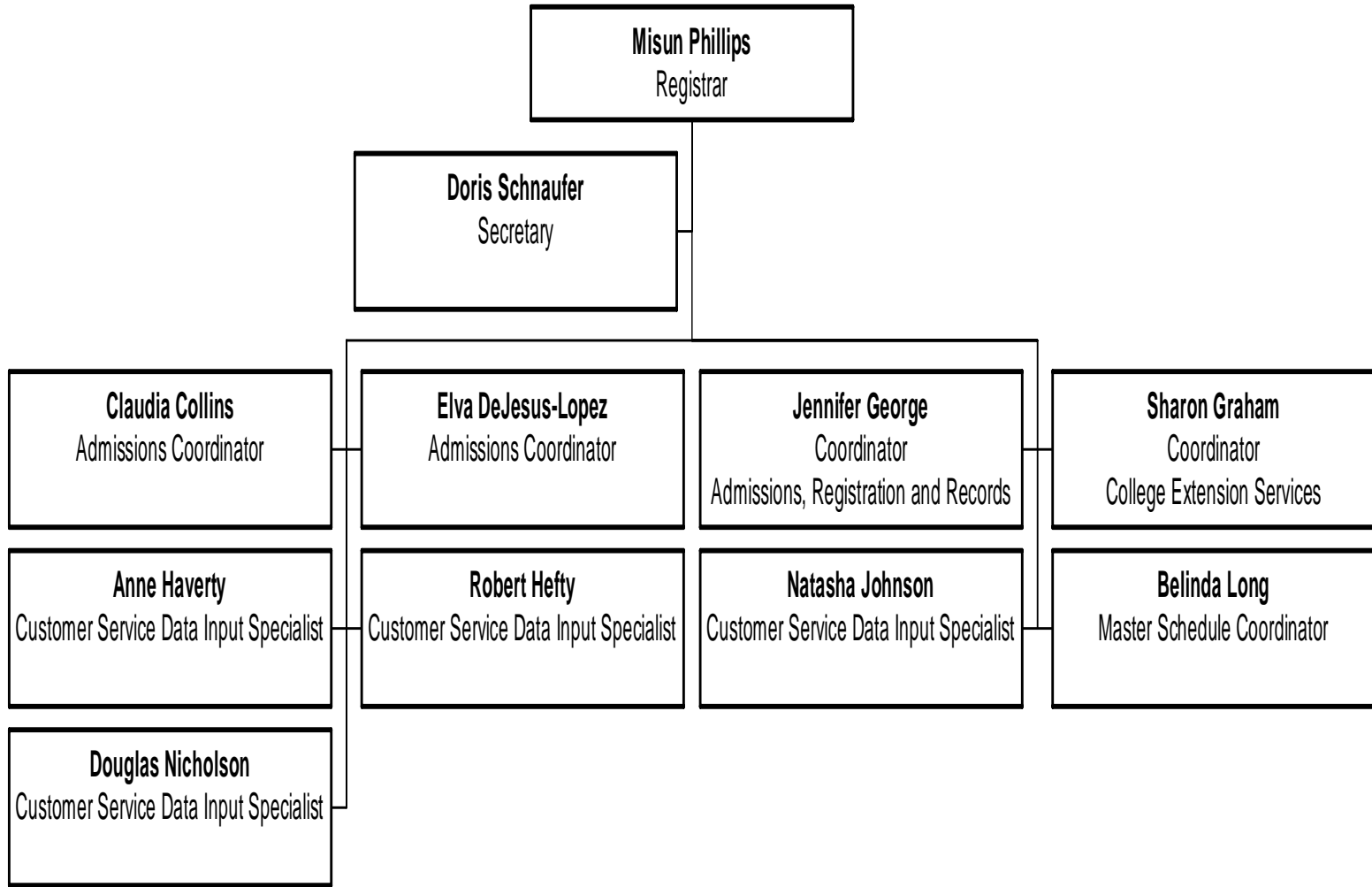
Student Services



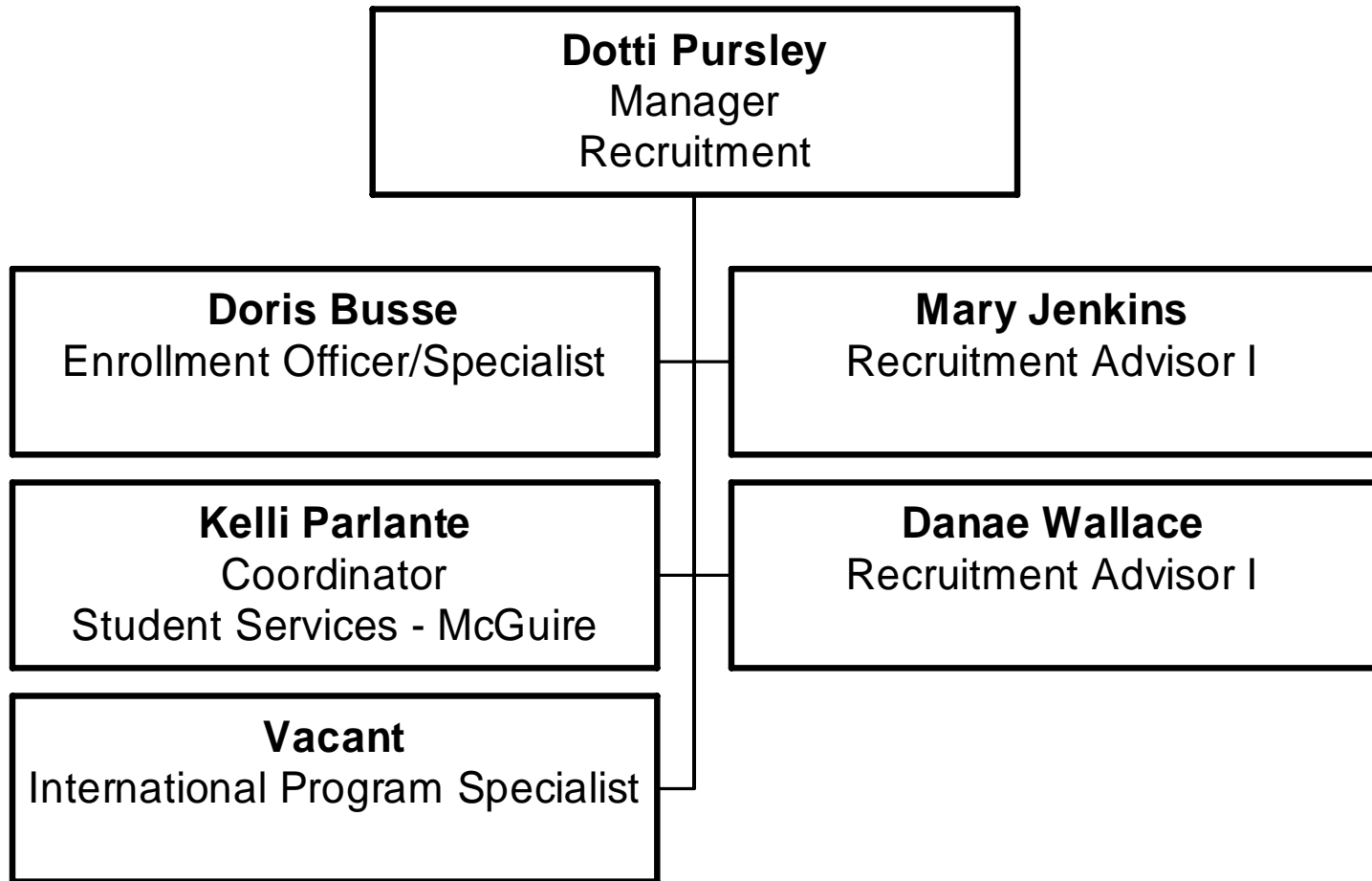
Educational Opportunity Fund (EOF)



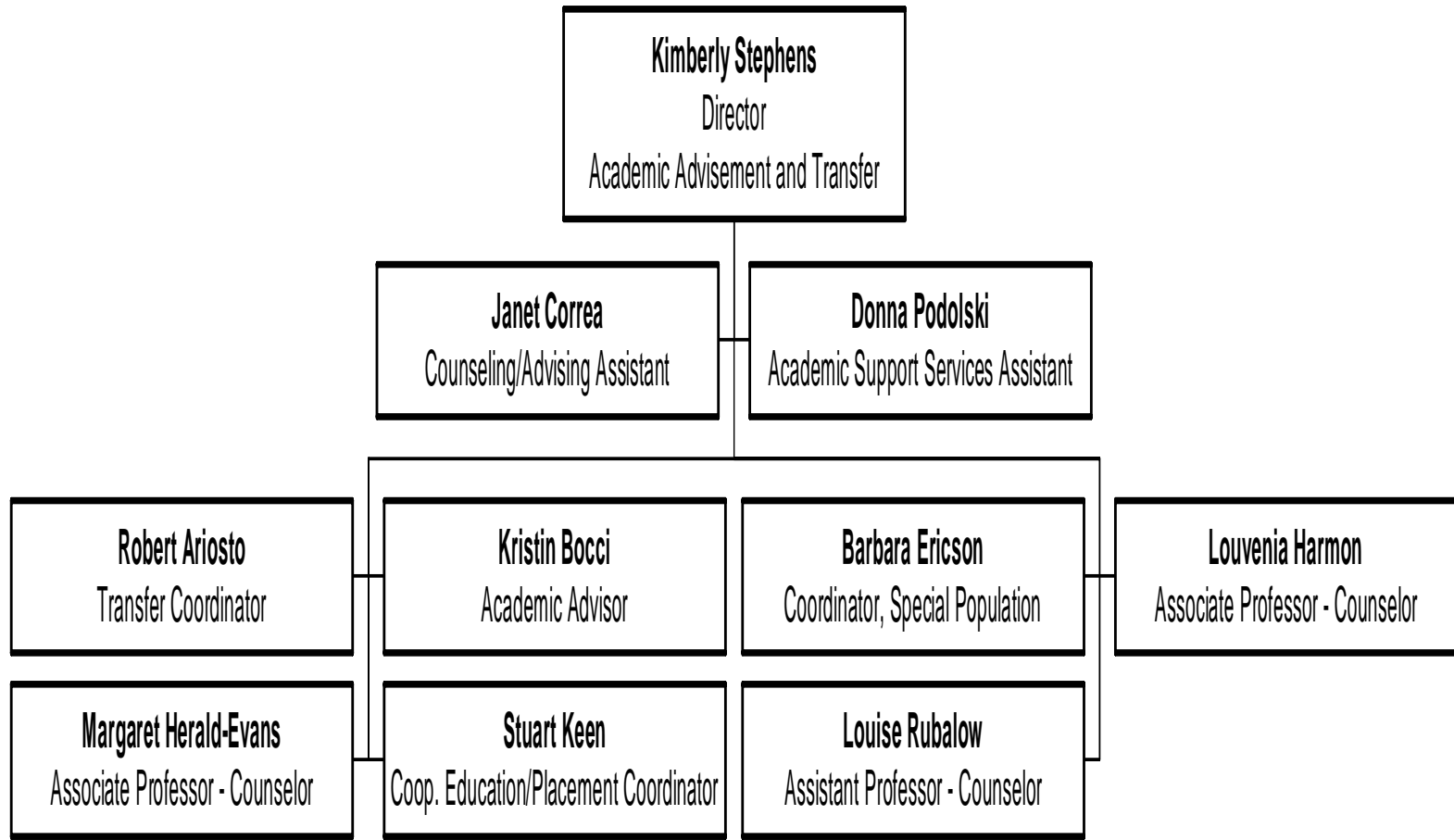
Registration



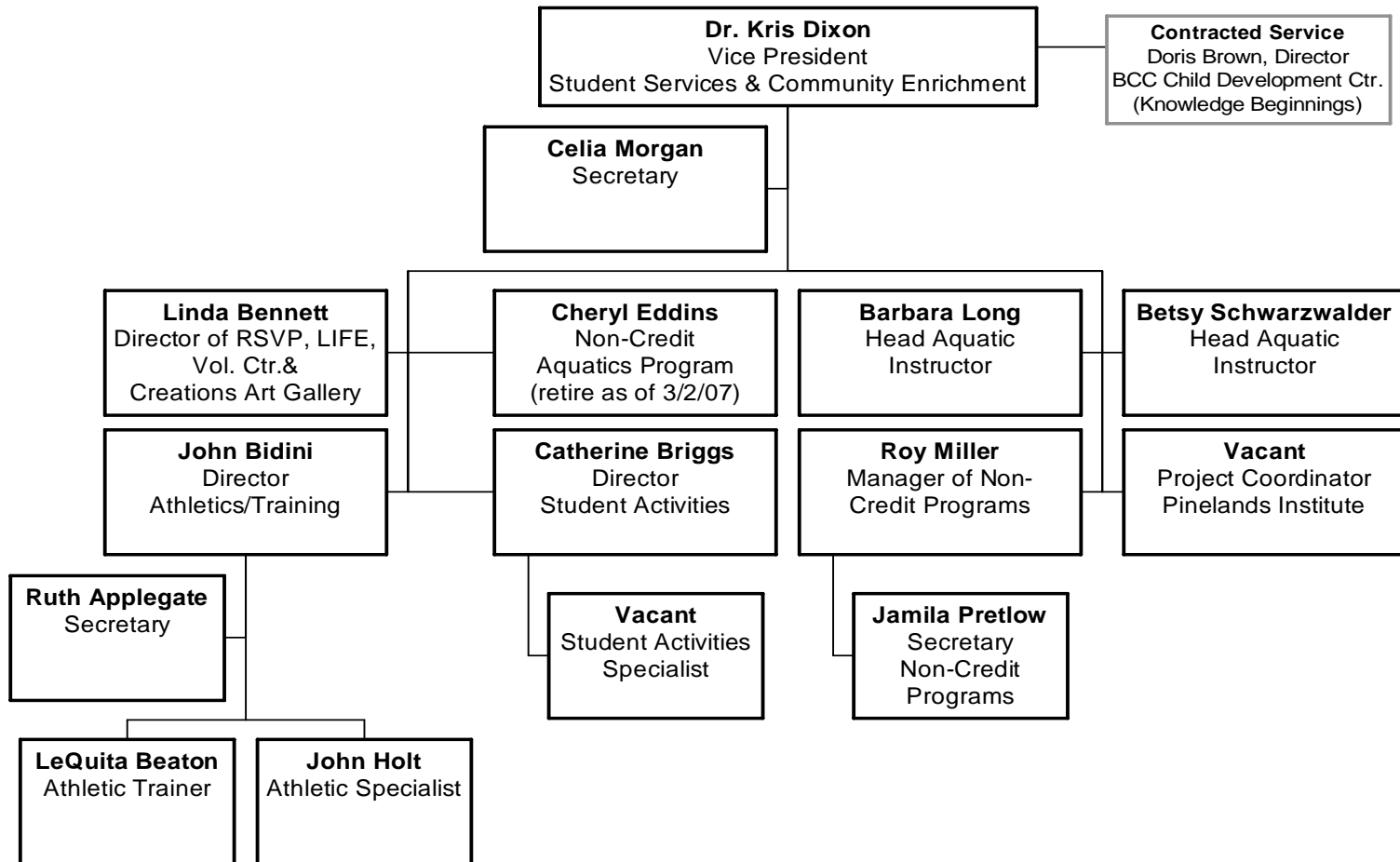
Recruitment



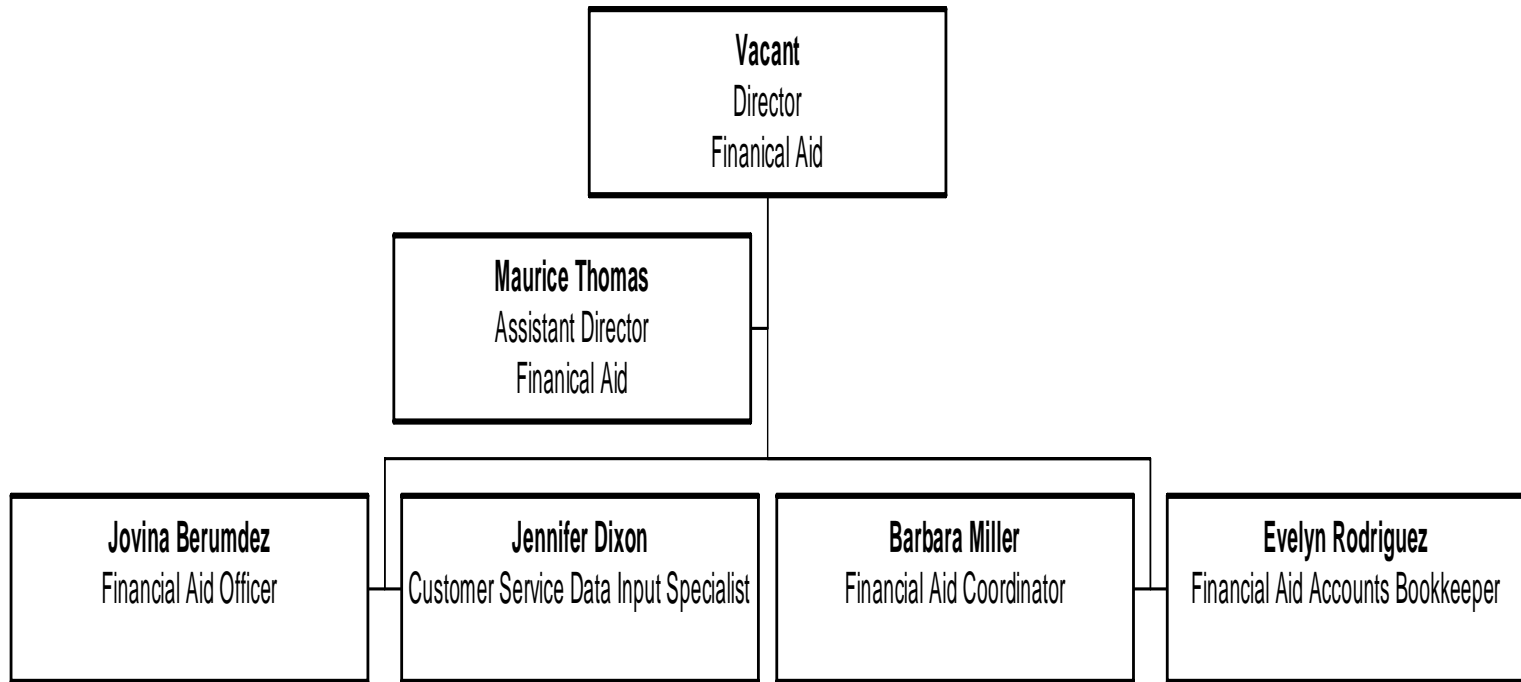
Academic Advisement and Transfer



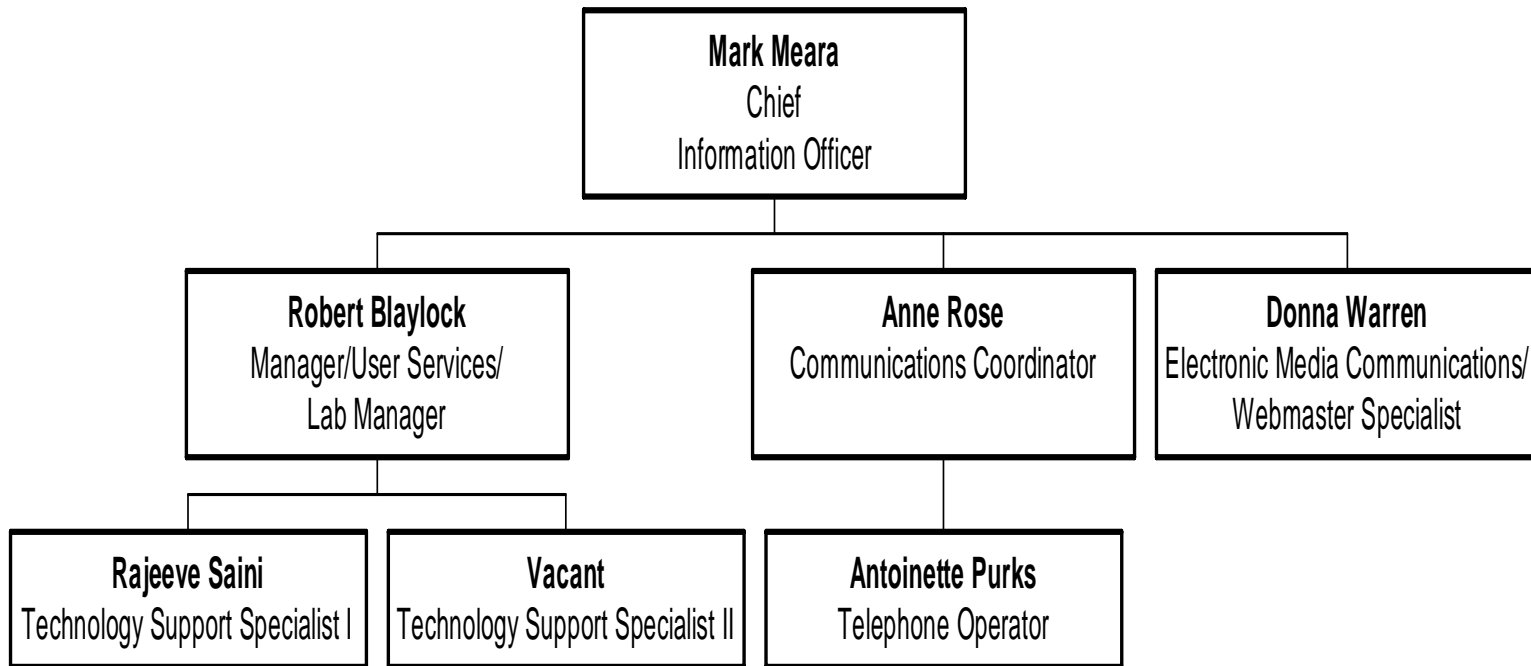
Community Enrichment



Financial Aid



OIT/PC Techs



Institutional Research

